

# WPFD TRAINING DIVISION

24901 County Road 95  
Davis, CA 95616  
(530) 756-0212



YOLO COUNTY COOPERATIVE  
TRAINING FACILITY @  
WEST PLAINFIELD FIRE DEPARTMENT

## TABLE OF CONTENTS

PROJECT DESCRIPTION	3
MATERIALS LIST	4
SITE DRAWINGS	5

## PROJECT DESCRIPTION

The West Plainfield Fire Department, Training Division, with the assistance of the West Plainfield Fire Department Volunteer Firefighters Association and the Woodland Community College Fire Academy, is developing a training facility on its premises for the benefit of its members, the community it serves, and the emergency services community of Yolo County.

The facility will train area firefighters in fire suppression and rescue techniques, utilizing a burn building and various props: roof, forcible entry, propane, etc. It is our hope that most of the materials and labor necessary to build up this training facility will be donated by various organizations and individuals throughout Yolo County.

The intent is to develop a training facility that is available to all emergency services agencies and educational agencies in Yolo County. It is hoped that initial funding can be located through grants, inter-agency agreements and private contributions. Ongoing operational expenses will be worked out as the facility comes together, but the concept is to create a training facility that provides a quality experience while not having a detrimental fiscal impact on any singular agency.

## MATERIALS LIST

### Con Ex Boxes

2 - 40 foot

1 - 20 feet

Exterior paint touchup

Delivery

Labor

### Gravel

40 tons of three-quarter crush

Delivery

### Generator and portable lighting

(generator and limited lighting currently available from WCC Fire Academy)

### Chain Link Fencing

6' high – 350 feet (donated by Heidrick Farms)

Gates – 2 (10 foot, 13 foot)

Steel Posts – 40

Fasteners – 120

Labor

15 gallon propane bottles - 3

Padlocks and Lock Sets (new or old, keyed or not, with our without keys)

### Miscellaneous Building Materials

½" plywood sheets – 10

12 gauge sheet metal – minimum 12" x 4' – 4 pieces

12 gauge sheet metal – minimum 12" x 8' – 4 pieces

12 gauge sheet metal – minimum 36" x 7' – 4 pieces

3" channel iron – minimum 7' – 8 pieces

3" channel iron – minimum 3' – 4 pieces

3" channel iron – minimum 4' – 4 pieces

2" angle iron – minimum 4' – 24 pieces

2x2 thick wall tubing 36" – 8 pieces

2x2 thick wall tubing 7' – 8 pieces

4" x 8' metal studs 30 pieces

Lumber for construction of props

2 X 4 X 10' - 20 each

2 X 6 X 10' – 20 each

4 X 4 X 10' – 12 each

### Miscellaneous Furnishings for Interior Burn Props

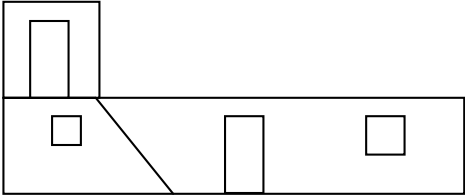
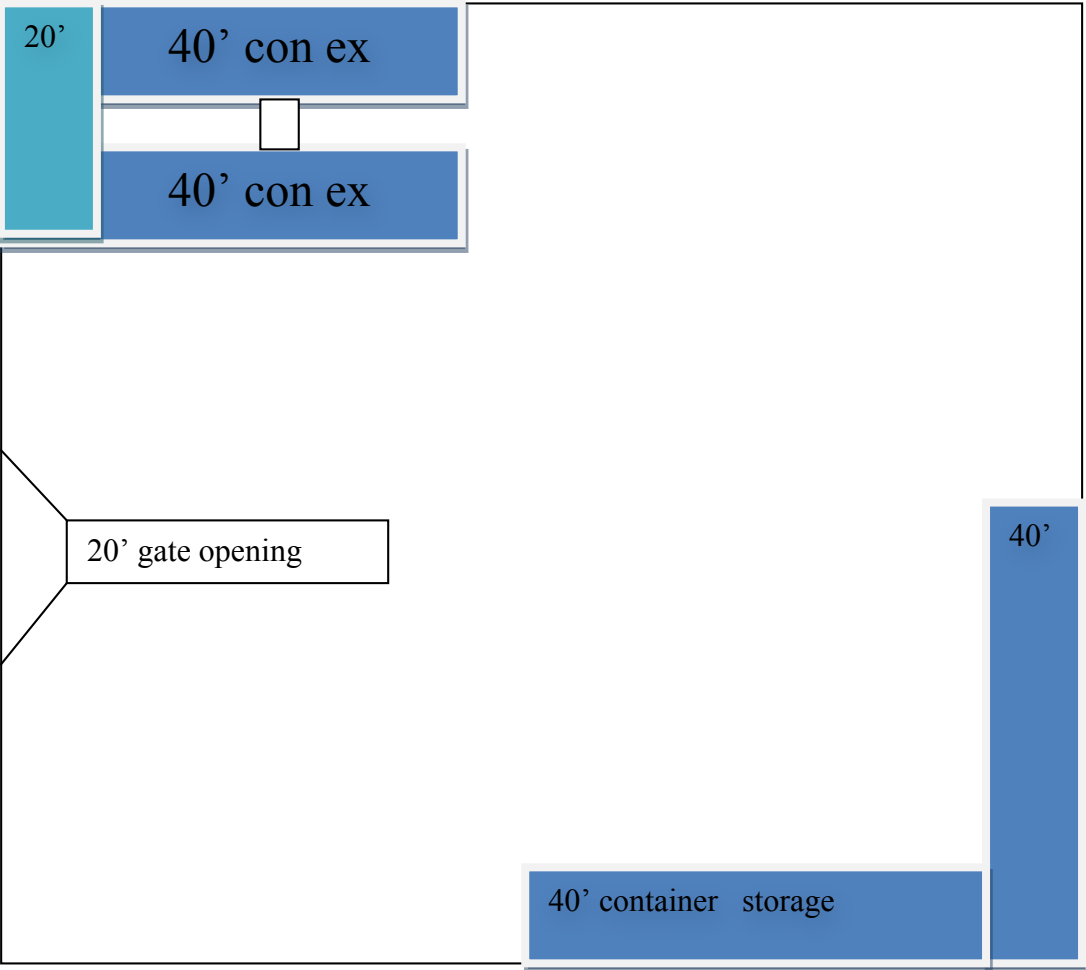
Kitchen

Living / Family Room

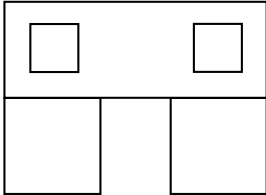
Bathroom

Bedroom

# SITE DRAWINGS



Side view of con ex



End view of con ex

# SITE DRAWINGS

